



**vo-CE 4.0**

**DEMO GUIDE**

[itworks srl](http://www.it-works.it)

<http://www.it-works.it/vo-CE>

Demo Guide

Released in November 2012

Copyright 2012

## INSTALLING AND LICENSING

1

Go to the website <http://www.it-works.it/vo-ce/licence.aspx> and download  
1. vo-CE setup  
2. vo-CE Tools



2

Unzip the downloaded file and copy the folder "vo-CE" in the flash memory of the device.

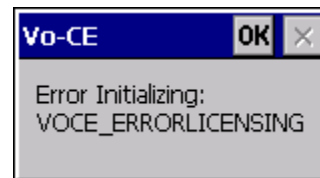
3

From the device, run the executable  
vo-CE\speech\components\Vo-CE.exe .



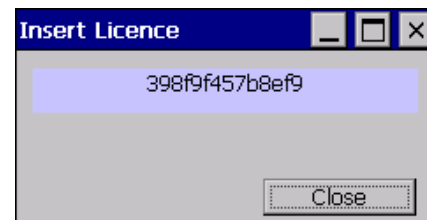
4

Press "OK" at the licensing error message.



5

Press "GetID" and copy the "machine Id" number.



6

Go back to the website <http://www.it-works.it/vo-ce/licence.aspx> and fill out the form (inserting the "machine Id" that has just been calculated). You will receive an e-mail with a license key. This a temporary license for 100 iterations. Once completed, the application will stop working but you can simply restart the program to continue running vo-CE.

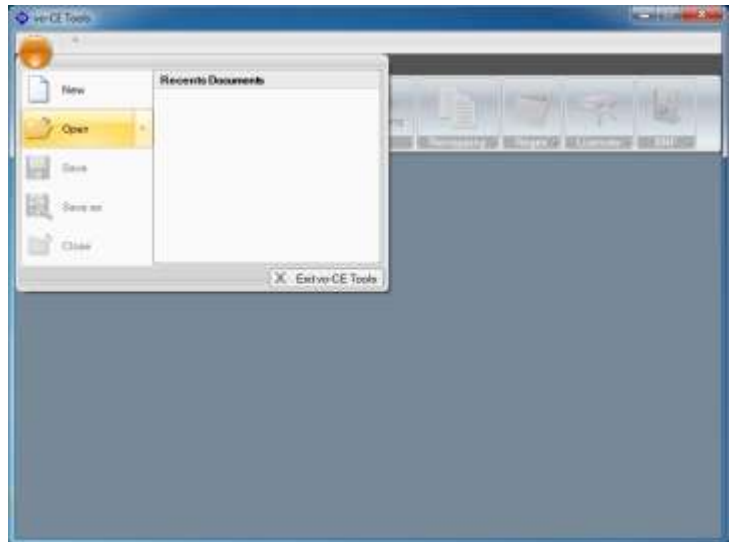
7

Install vo-CE Tools on your PC.

- BY VO-CE TOOLS

8

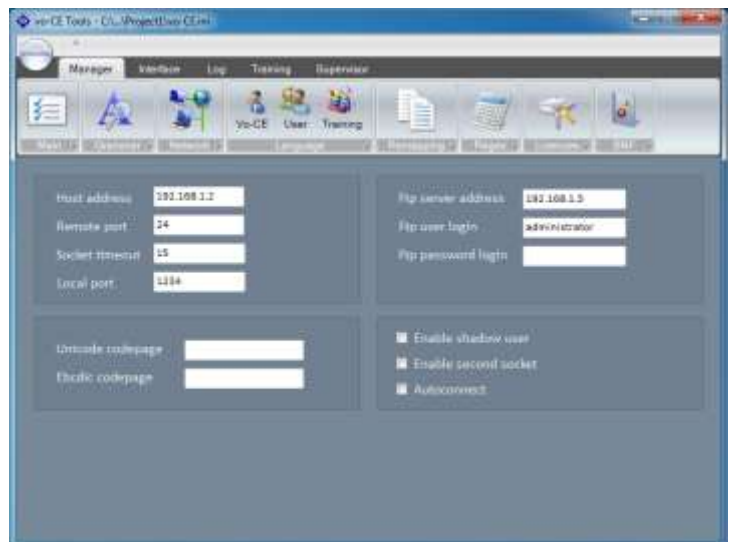
Open the file vo-CE.ini (\vo-CE\vo-CE.ini) that contains all the parameters needed for vo-CE configuration.




9

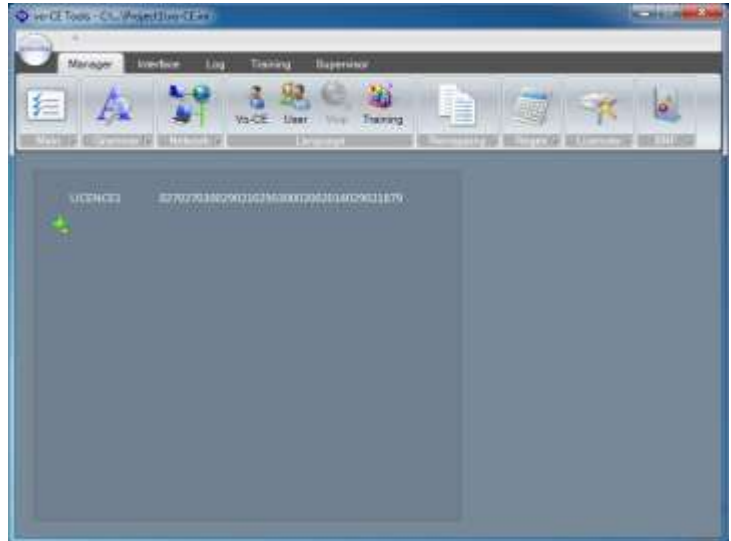
In the **Manager** application, under the **Network** section, set the following parameters:

1. *Host address*:  
IP address of the PC in which vo-CE Tools is installed;
2. *Remote port*:  
Port of the PC which vo-CE Tools will listen (default 24);
3. *Local port*:  
TCP/IP port for the emulator connection (default 1234).



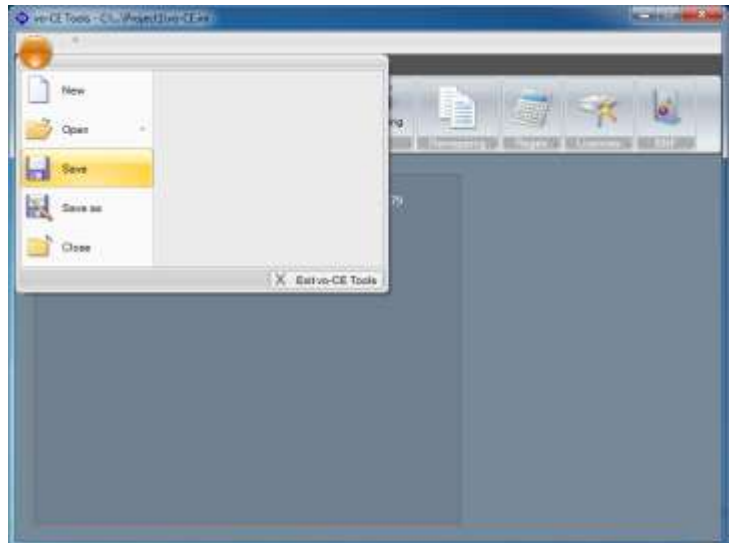
10

In the **Licences** section, press the  button and insert the license that you have received by e-mail.



11

Press the "Save" button.



12

Copy the configuration file (vo-CE.ini) to the "flash memory"\vo-CE folder of the device, replacing the existing file.

- **WITH NOTEPAD**

8

Open the vo-CE.ini file (\vo-CE\vo-CE.ini) that contains all the parameters needed for vo-CE configuration.

9

Set the following parameters in the **[NETWORK]** section:

1. IP: IP address of the PC in which vo-CE Tools is installed;
2. REPORT: port of the PC which vo-CE Tools will listen to (default 24);
3. LOPORT: TCP/IP port for the emulator connection (default 1234).

10

Insert the license that you have received by e-mail in the **[LICENCE]** section.  
Example: LICENCE1=027027030029021029030002002014029021879

11

Save the changes to the file.

12

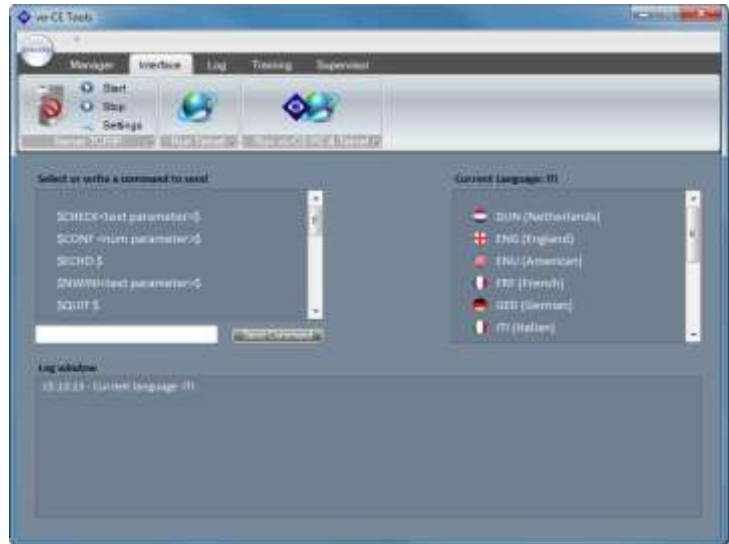
Copy the configuration file (vo-CE.ini) to the "flash memory"\vo-CE folder of the device, replacing the existing file.

## PERFORM THE DEMO TCP/IP SERVER

- **PC**

13

Open vo-CE Tools and go to **Interface**.



14

Press the "Settings" button and check that the port which vo-CE is listening to corresponds to the parameter REPORT in the vo-CE.ini.

**NOTE:** if you are using a firewall check that the port is not blocked.



15

Choose the language according to the vo-CE setup.

16

Press the "Start" button.  
vo-CE Tools is now waiting for the connection.

## • DEVICE

17 Connect the device to the same network of the PC where vo-CE Tools is installed.

18 Start the vo-CE application  
(vo-CE\speech\components\Vo-CE.exe) .



19 Launch the emulator and set up a session with the following parameters:  
Host Address = 127.0.0.1  
Port = port defined in the vo-CE.ini file (default 1234)  
Type = VT100 or VT220

20 Connect the emulator.

*The application Interface of vo-CE Tools is not a real WMS, but simulates some of its functions to show how vo-CE can be integrated into a picking activity.*

To simplify the demo, during the simulation, the check digit is the number of the location; of course in reality, these values are not the same.

### **Remember to spell each digit and not the full number**

(Example: 14 OK → one four OK. Don't say "fourteen OK")

The picking order is 1.

Example:

WMS: Insert the picking order

USER: 1 OK (one OK)

WMS: Go to location L19

USER: 19 OK (one nine OK)

WMS: Pick 2 Pieces

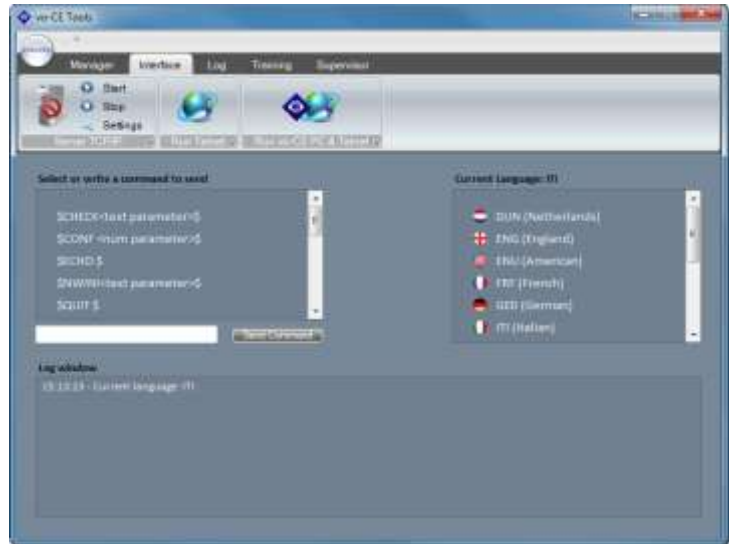
USER: 2 OK (two OK)

## PERFORM THE DEMO HTTP SERVER

- **PC**

13

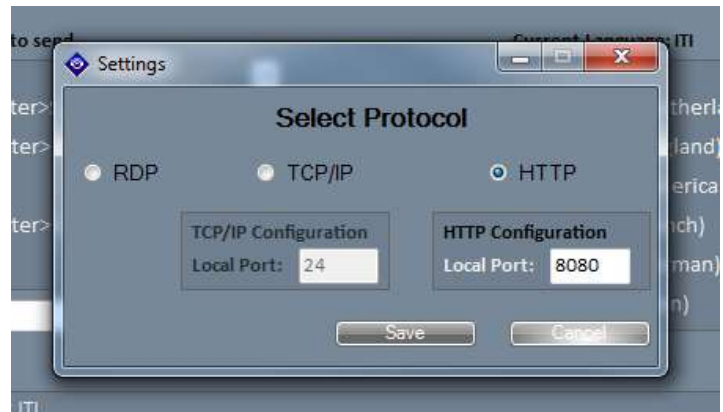
Open vo-CE Tools and go to **Interface**.



14

Press the "Settings" button, select HTTP and check that the port used by the server corresponds to the parameter REPORT in the vo-CE.ini.

**NOTE:** if you are using a firewall check that the port is not blocked.



15

Choose the language according to the vo-CE setup.

16

Press the "Start" button.  
vo-CE Tools now is ready to accept an HTTP connection

## • DEVICE

17

Configure vo-CE to use HTTP: set the HTTP parameter to 1, set the parameter IP REPORT and LOPORT according to your needs.

18

Connect the device to the same network of the PC where vo-CE Tools is installed.

19

Start the vo-CE application (vo-CE\speech\components\Vo-CE.exe).



20

Connect device browser to this IP: `http://127.0.0.1:<LOPORT>`  
**NOTE:** change <LOPORT> to the port number chosen.

*The application Interface of vo-CE Tools is not a real WMS, but simulates some of its functions to show how vo-CE can be integrated into a picking activity.*

To simplify the demo, during the simulation, the check digit is the number of the location; of course in reality, these values are not the same.

### **Remember to spell each digit and not the full number**

(Example: 14 OK → one four OK. Don't say "fourteen OK")

The picking order is 1.

Example:

WMS: Insert the picking order

USER: 1 OK (one OK)

WMS: Go to location L19

USER: 19 OK (one nine OK)

WMS: Pick 2 Pieces

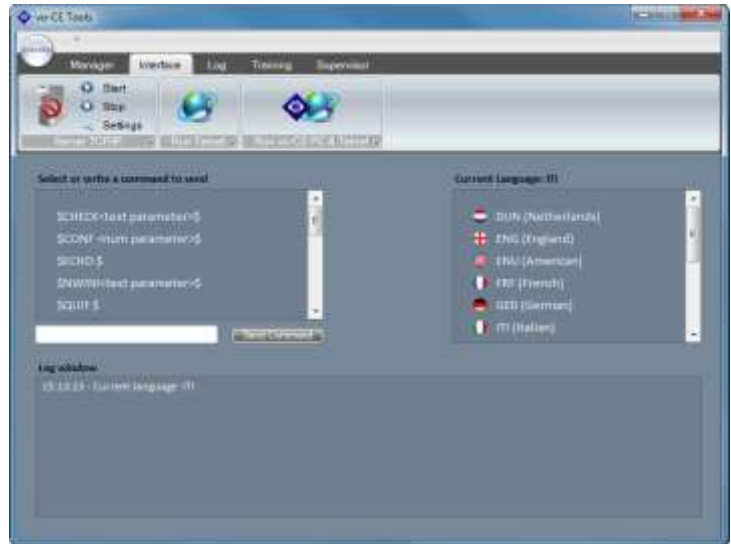
USER: 2 OK (two OK)

## PERFORM THE DEMO RDP SERVER

- **PC**

13

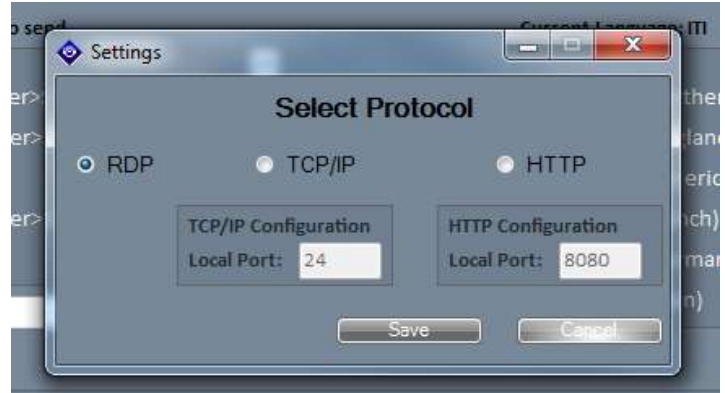
Open vo-CE Tools and go to **Interface**.



14

Press the "Settings" button, select RDP

**NOTE:** make sure that RDP is enabled on your PC



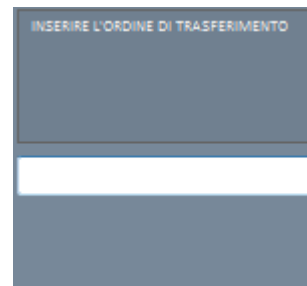
15

Choose the language according to the vo-CE setup.

16

Press the "Start" button.

**NOTE:** a small form will appear in the left corner of the device. It has been created for devices with a small screen.



## • DEVICE

17

Configure vo-CE to use RDP, set the RDP parameter to 1, set the Run Asr At Startup parameter to 1

18

Connect the device to the same network of the PC where vo-CE Tools is installed.

19

Start the vo-CE application  
(vo-CE\speech\components\Vo-CE.exe).



20

Open the Remote Desktop Protocol Application on the device and connect the device to the PC with vo-CE tools running.

*The application Interface of vo-CE Tools is not a real WMS, but simulates some of its functions to show how vo-CE can be integrated into a picking activity.*

To simplify the demo, during the simulation, the check digit is the number of the location; of course in reality, these values are not the same.

### **Remember to spell each digit and not the full number**

(Example: 14 OK → one four OK. Don't say "fourteen OK")

The picking order is 1.

Example:

WMS: Insert the picking order  
USER: 1 OK (one OK)

WMS: Go to location L19  
USER: 19 OK (one nine OK)

WMS: Pick 2 Pieces  
USER: 2 OK (two OK)

## NOTES

The SDK documentation is available at this link <http://www.it-works.it/vo-ce/sdk/> .

Here you can download two simple examples of vo-CE SDK integration:

example in C# - [http://www.it-works.it/download/vo-ce/test\\_csharp.zip](http://www.it-works.it/download/vo-ce/test_csharp.zip)

example in VB.NET - [http://www.it-works.it/download/vo-ce/test\\_vb.zip](http://www.it-works.it/download/vo-ce/test_vb.zip)

Note:

- any application that uses SDK vo-CE must be deployed in the folder  
  \vo-CE\speech\components\
- remember not to deploy vo-CE SDK with your application

For **technical support** contact: [vo-ce.help@it-works.it](mailto:vo-ce.help@it-works.it)

For **sales inquiries** and **marketing support** contact : [vo-ce.info@it-works.it](mailto:vo-ce.info@it-works.it)

Itworks S.r.l.

Via Luigi Albertini, 36

60131 Ancona

Ph. + 39 071 2868089

Fax + 39 071 2868124

[www.it-works.it/vo-CE](http://www.it-works.it/vo-CE)